



ULTRASONIC IMMERSIBLE TRANSDUCERS - TYPE IP



POWER **S**ONICS' line of "flat" immersible transducers are designed for aggressive scrubbing action. These magnetostrictive transducers operate at 20 kHz and have a power output of 1000 Watts each.

With many sizes from which to choose, improving the cleaning performance of any cleaning tank is simple. The self contained units mount in the tank and are powered by the strong Power Sonics Magnum generators.

TRANSDUCER FEATURES

- **MORE EVEN CAVITATION - FASTER**

The exclusive Power Sonics lamination design and layout result in a transducer which achieves cavitation easily and quickly. This occurs in relatively un-degassed as well as fully degassed solutions.

- **HIGH INTENSITY MAGNETOSTRICTIVE DESIGN**

As the name implies, power in the bath directly affects cleaning capability. The 20 kHz magnetostrictive transducer, driven as a uniform unit by an intense generator signal, optimizes energy transfer to the bath to maximize ultrasonic scrubbing. By exploiting all factors in design and construction, power levels of 10 Watts per square inch are achieved.

- **EFFICIENT DESIGN YIELDS LONGER LIFE**

The high efficiency of this new transducer design also reduces stress on generator components which result in extended generator life.

- **INTERCHANGEABLE WITH WESTINGHOUSE EQUIPMENT**

Power Sonics Type IP immersible transducers are directly interchangeable both electrically and mechanically with transducers previously manufactured by Westinghouse Electric Corporation.

- **STANDARD FEATURES**

316L stainless steel on all wetted surfaces.

Standpipe configured models come in five different end exit positions.

Bulkhead configured models are available with one end or one bottom conduit exit.

Standard cable length is eight feet.

Braided flexible configured models.

- **OPTIONS AVAILABLE**

Special alloy materials are available for immersibles which are to be subjected to solutions incompatible with standard 316L.

Hard surface finish coatings are available for high reflective, abrasive, and "shallow bath" applications.

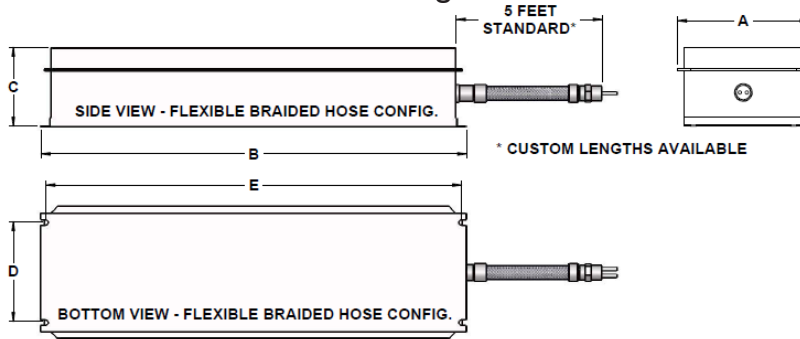
Custom sizes and conduit configurations are available.

Additional cable extensions of either 10 feet (CE10) or 25 feet (CE25) are available as options. A maximum of 50 feet of extension is allowed without prior approval from Power Sonics.

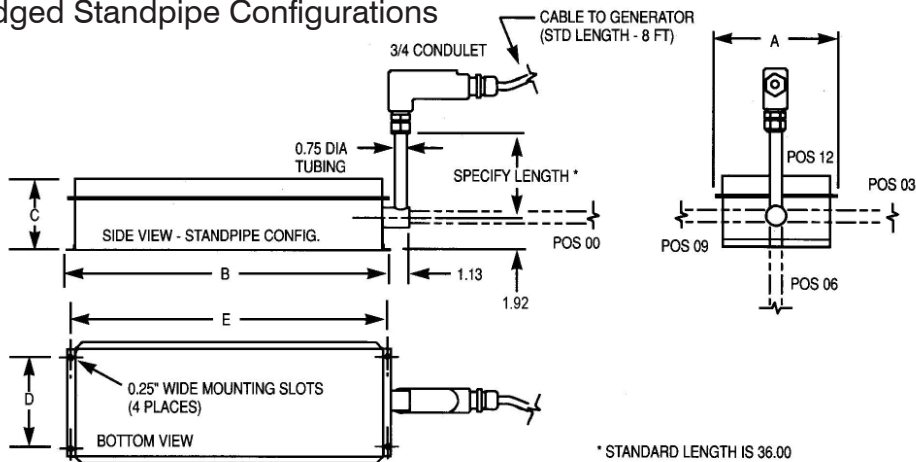
Reflectors are available to match any model transducer and are identical in size to the immersibles except have no internal parts. Reflectors are used when an unsuitable reflecting plane is present such as an uneven surface, angled surface, or excessive tank size. Active transducers are interchangeable with reflectors.

STANDARD TRANSDUCER CONFIGURATIONS AVAILABLE

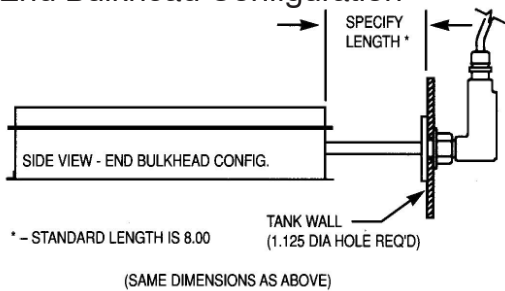
Flexible Stainless Steel Hose Configurations



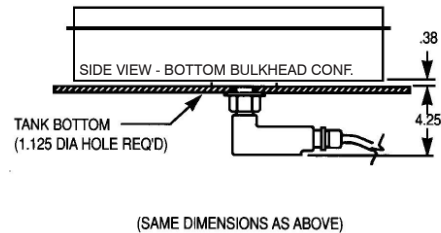
Ridged Standpipe Configurations



End Bulkhead Configuration



Bottom Bulkhead Configuration



PRODUCT INFORMATION					
MODELS		IP-0820	IP-1114	IP-0824	IP-0830
Overall Width	A	7.50"	10.50"	7.50"	7.50"
Overall Length	B	20.25"	14.25"	24.25"	30.25"
Height	C	4.50"	4.50"	4.50"	4.50"
Mounting Width	D	5.70"	8.75"	5.70"	5.70"
Mounting Length	E	19.70"	13.70"	23.70"	29.70"
Shipping Weight (approx. lbs.)		55	55	65	75