



Ultrasonic Immersible Transducers - Type IP

Overview

Power Sonics line of "flat" immersible transducers are unlike other transducers available in the industry today. These are exclusive new designs, not copies, based on proven technology originally developed and patented by Power Sonics personnel and improved over forty years of ultrasound experience

Type IP Immersible models available (partial list):

Model IP-0820	powered by
Model IP-1114	various
Model IP-0824	models of
Model IP-0830	Power Sonics
Model IP-1620	ultrasonics
Model IP-1128	generators

Type IP immersible transducers are modular and are used one on one with modular Power Sonics ultrasonic generators for maximum flexibility in application.

Refer to [PROD-SPEC-GEN](#) or [Power Sonics](#) for generator choices.

Individual Transducer Features

• **MORE EVEN CAVITATION - FASTER**

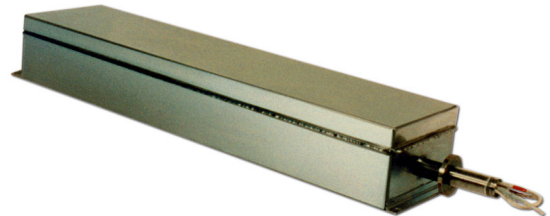
The exclusive Power Sonics lamination design and layout result in a transducer which achieves cavitation easily and quickly. This occurs in relatively un-degassed as well as fully degassed solutions.

• **HIGH INTENSITY MAGNETOSTRICTIVE DESIGN**

This type of magnetostrictive transducer design consists of individual laminations driven by a common coil. Coverage of the radiating surface with laminations in unique layouts results in a "SYNERGISTIC" driving action of the radiating surface. This action allows Power Sonics IP transducer to be driven at the highest usable power levels. Levels of ten Watts per square inch, and more, of lamination area are typical with this high Q design.

• **EFFICIENT DESIGN YIELDS LONGER LIFE**

The high efficiency of this new transducer design also reduces stress on generator components which results in extended generator life.



• **STANDARD FEATURES**

- 316L stainless steel on all wetted surfaces
- Standpipe configured models come in five different end exit positions..
- Bulkhead configured model are available with one end and one bottom conduit exit.
- Standard cable length is eight feet.

• **STANDARD OPTIONS AVAILABLE**

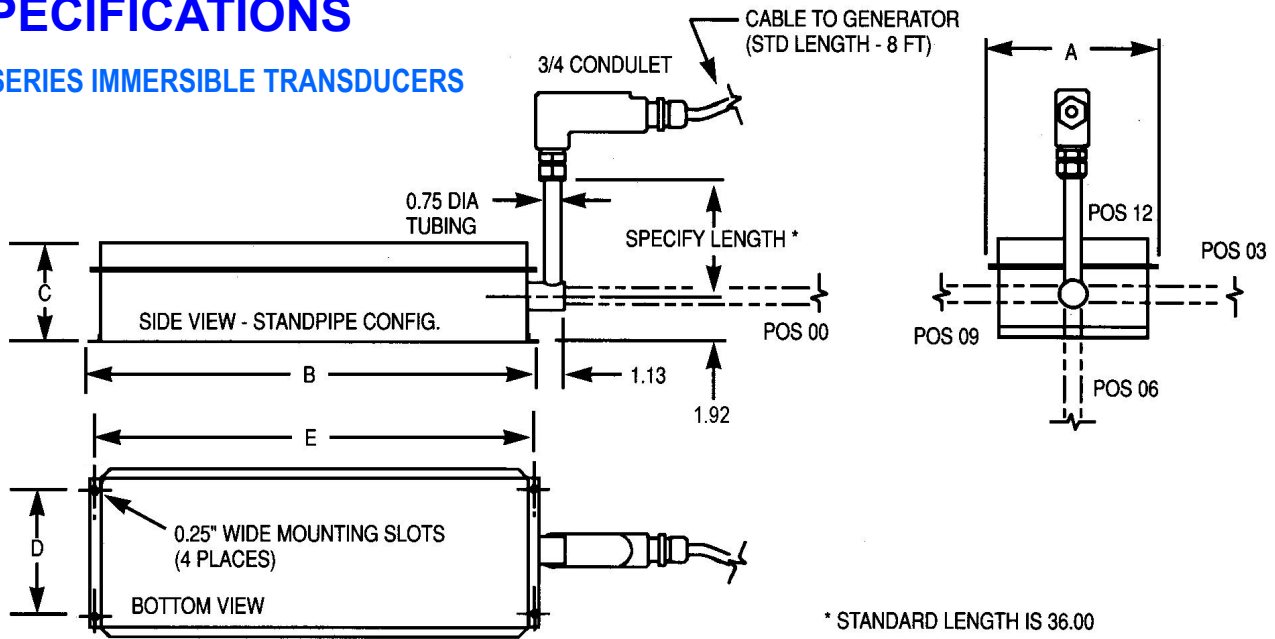
- Special alloy materials are available for immersibles which are to be subjected to solutions incompatible with standard 316L.
- Hard surface finish coatings are available for high reflective, abrasive and "shallow bath" applications.
- Custom sizes and conduit configurations are available.
- Additional cable extensions of either 10 feet (CE10) or 25 feet (CE25) are available as options. A maximum of 50 feet of extensions are allowed without prior approval from Power Sonics.
- Reflectors are available to match any model transducer and are identical in size to the immersibles except have no internal parts. Reflectors are used when an unsuitable reflecting plane is present such as an uneven surface, angled surface or excessive tank size. Physical interchangeability allow easy future upgrade to active transducers if the application requires it.

• **INTERCHANGEABLE WITH WESTINGHOUSE EQUIPMENT**

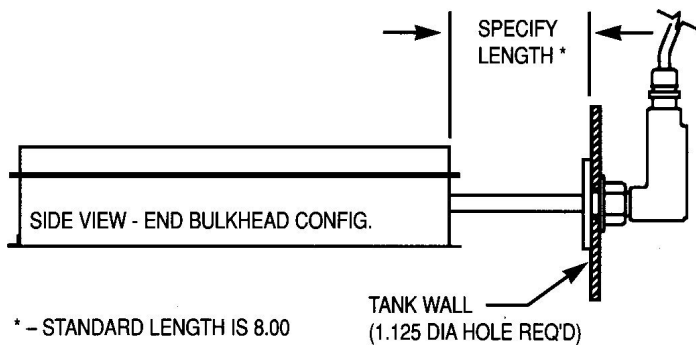
Power Sonics Type IP immersible transducers are directly interchangeable both electrically and mechanically with transducers previously manufactured by Westinghouse Electric Corporation.

SPECIFICATIONS

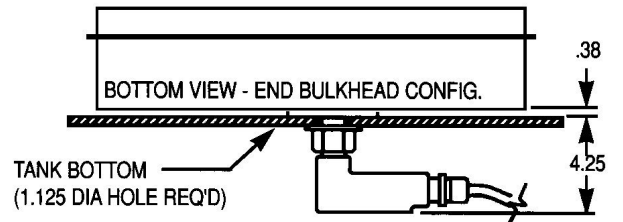
IP SERIES IMMERSIBLE TRANSDUCERS



* STANDARD LENGTH IS 36.00



(SAME DIMENSIONS AS ABOVE)



(SAME DIMENSIONS AS ABOVE)

MODEL	DIMENSIONS (IN)					APPROX. SHIP WGT
	A	B	C	D	E	
IP-0820	7.50	20.25	4.50	5.70	19.70	55#
IP-1114	10.50	14.25	4.50	8.75	13.70	55#
IP-0824	7.50	24.25	4.50	5.70	23.70	65#
IP-0830	7.50	30.25	4.50	5.70	29.70	75#
IP-1620	14.50	20.25	4.50	13.60	13.70	100#
IP-1128	10.50	28.25	4.50	8.75	27.70	100#

TYPE IR REFLECTORS ARE THE SAME DIMENSIONS AS TYPE IP TRANSDUCERS.

PROD-SPEC-IMM 090102

For analysis of cleaning applications, submit completed [Engineering Study Form \(ESF\)](#)



POWER SONICS, LLC
 5320 Enterprise Street, Eldersburg, MD 21784
 (410) 552-1011 Fax: (410) 552-1396

POWER SONICS SALES OFFICE
 Canton, OH
 (330) 497-7441 Fax: (330) 497-7442