



Radial In-Line Ultrasonic Products - Type RT

Overview

Power Sonics line of PowerZone and other Radial transducers are unlike any other transducers available in the industry today. These exclusive new designs are by Power Sonics personnel who invented the original cylindrical transducer.

Type RT Radial system models available (partial list):

- Model RTIS-1K50 1kW 50 gal ... Integral Station
- Model RTIS-2K502kW 50 gal ... Integral Station
- Model RTCS-1K100 ... 1kW..... 95 gal ... Composite System
- Model RTCS-2K100 ... 1kW..... 95 gal ... Composite System
- Model RTCS-2K200 ... 2kW... 185 gal ... Composite System
- Model RTCS-3K200 ... 3kW... 185 gal ... Composite System
- Model RTCS-4K200 ... 4kW... 185 gal ... Composite System

Type RT Radial transducers are modular and used one on one with modular Power Sonics GR and GRM ultrasonic generators for maximum flexibility in application.

Refer to [PROD-SPEC-GEN](#) or [Power Sonics](#) for generator choices.

Radial Transducer Products

• ULTRA-HIGH FOCUSED ENERGY DESIGN

The exclusive Power Sonics lamination design and layout result in a transducer which achieves cavitation easily and quickly even with a solution and product flow during operation. This occurs in relatively un-degassed as well as fully degassed solutions.

• HIGH INTENSITY MAGNETOSTRICTIVE DESIGN

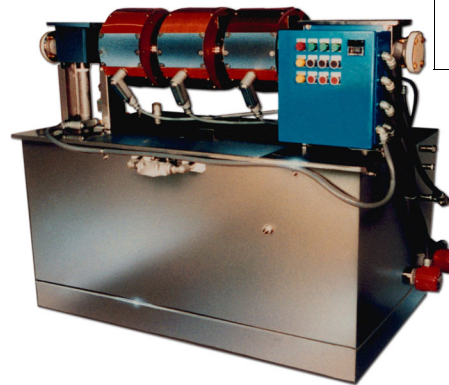
This type of magnetostrictive transducer is a high-Q design. This design and focused energy pattern produces power density levels many orders of magnitude higher than "flat" transducers, even our own Type IP units.

• EFFICIENT DESIGN YIELDS LONGER LIFE

The high efficiency of this new transducer design also reduces stress on generator components which results in extended generator life.

• FOCUSED POWER HAS MANY APPLICAITONS

- WIRE STRIP CABLE
- TUBE FORMED SHAPE
- ROD BAR
- PROCESSING MIXING



• RADIAL INTEGRAL IN-LINE STATIONS

These are smaller, completely integrated stations, typically 50 gallon capacity, including generators, filters, etc. on a common mounting base.

• RADIAL COMPOSITE IN-LINE SYSTEMS

These are fully assembled larger systems of 100 or 200 gallons for larger production needs. Ultrasonic generators are purchased and mounted separately on these systems.

• STANDARD SYSTEM FEATURES

- 316L stainless steel on all wetted surfaces
- Type RT Radial transducers
- Type GR or GRM Ultrasonic generators
- Entrance and Exit transition floodboxes
- Product guide and overflow weir block sets
- Liquid level interlock
- Immersion pumps
- Immersion heaters
- Digital Temperature Indicating controller
- Operator control panel and system control

• STANDARD OPTIONS AVAILABLE

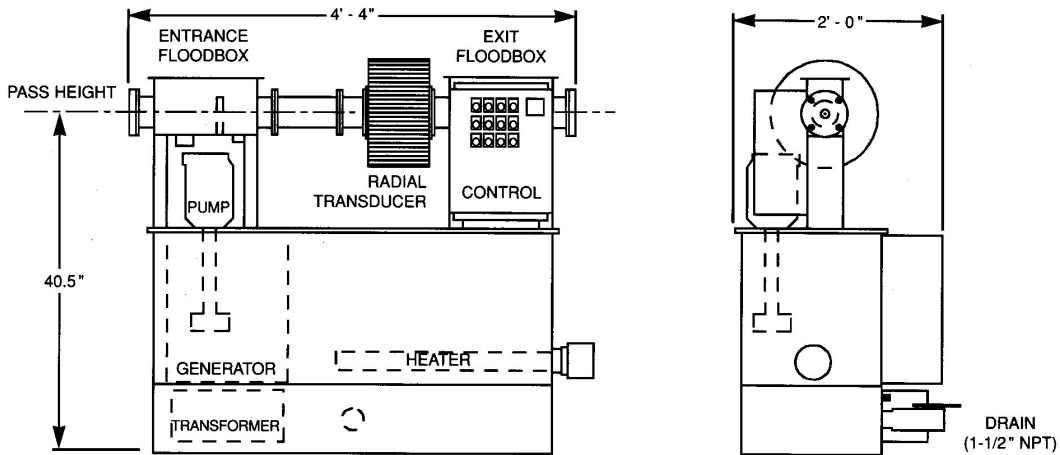
- Special alloy transducer materials
- Entrance and Exit Spray Rinses
- Exit Air Wipes, Drain pans and Exhaust Chambers
- Integrated Filters and Blowers
- Integrated Rinse tank reservoirs
- Custom tank, Solution make-up and control

• INTERCHANGEABLE WITH WESTINGHOUSE PRODUCT

Type RT Radial products are electrically and mechanically interchangeable with Westinghouse products.

SPECIFICATIONS

RT SERIES INTEGRAL STATIONS

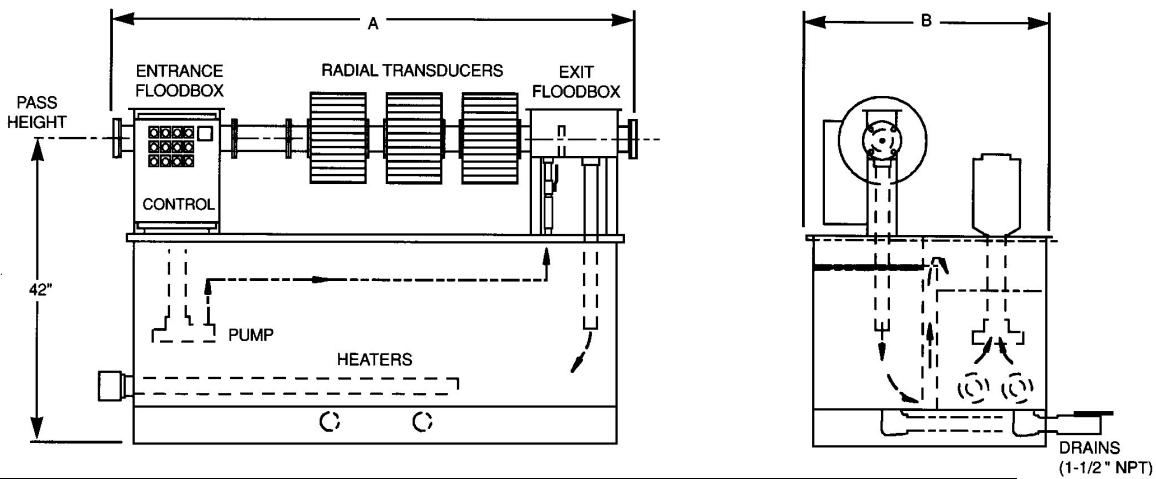


MODEL	ULTRASONIC POWER	NUMBER OF TRANS & GENS	SOLUTION CAPACITY	PUMP MOTOR	HEATER POWER
RTIS-1K50	1000 WATTS	1 SET	50 GAL	1/4 HP	10.5 KW
RTIS-2K50	2000 WATTS	2 SETS	50 GAL	1/4 HP	10.5 KW

Electrical Service -
460V, 3PH, 50/60HZ, 20A

RT SERIES COMPOSITE SYSTEMS

NOTE: Model RTCS-3K200 is illustrated on this drawing.



MODEL	ULTRASONIC POWER	SOLUTION CAPACITY	DIMENSIONS (IN)		HEATER POWER	PUMP MOTOR
			A	B		
RTCS-1K100	1000 WATTS	95 GAL	4' - 4"	2' - 4"	18KW	1/2 HP
RTCS-2K100	2000 WATTS	95 GAL	4' - 4"	2' - 4"	18KW	1/2 HP
RTCS-2K200	2000 WATTS	185 GAL	6' - 1"	2' - 10"	18KW	3/4 HP
RTCS-3K200	3000 WATTS	185 GAL	6' - 1"	2' - 10"	18KW	3/4 HP
RTCS-4K200	4000 WATTS	185 GAL	6' - 1"	2' - 10"	18KW	3/4 HP

PROD-SPEC-RAD 090102

For analysis of cleaning applications, submit completed [Engineering Study Form \(ESF\)](#)



POWER SONICS, LLC
5320 Enterprise Street, Eldersburg, MD 21784
(410) 552-1011 Fax: (410) 552-1396

POWER SONICS SALES OFFICE
Canton, OH
(330) 497-7441 Fax: (330) 497-7442